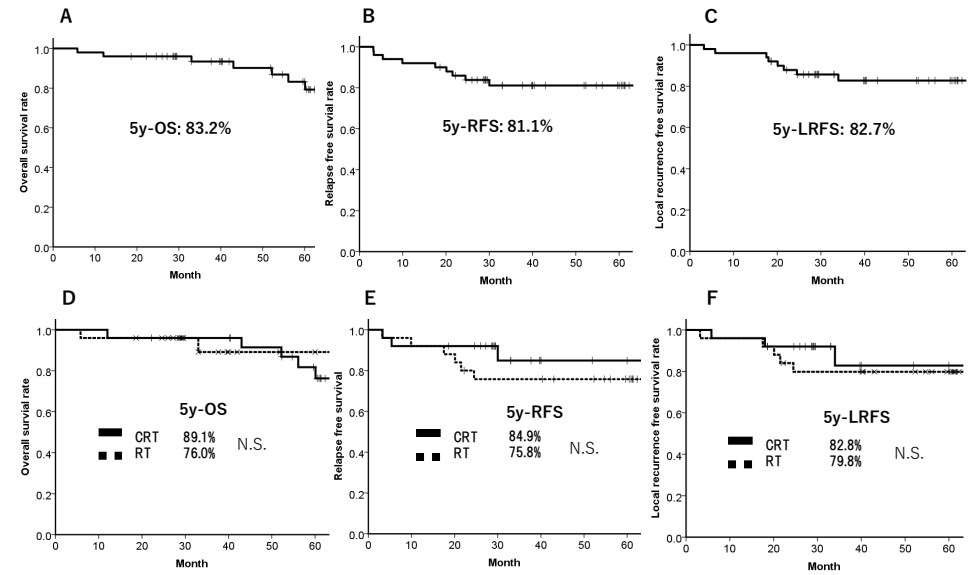


Long-term Outcomes of Lower Rectal Cancer Patients Treated with Total Mesorectal Excision and Lateral Pelvic Lymph Node Dissection after Preoperative Radiotherapy or Chemoradiotherapy

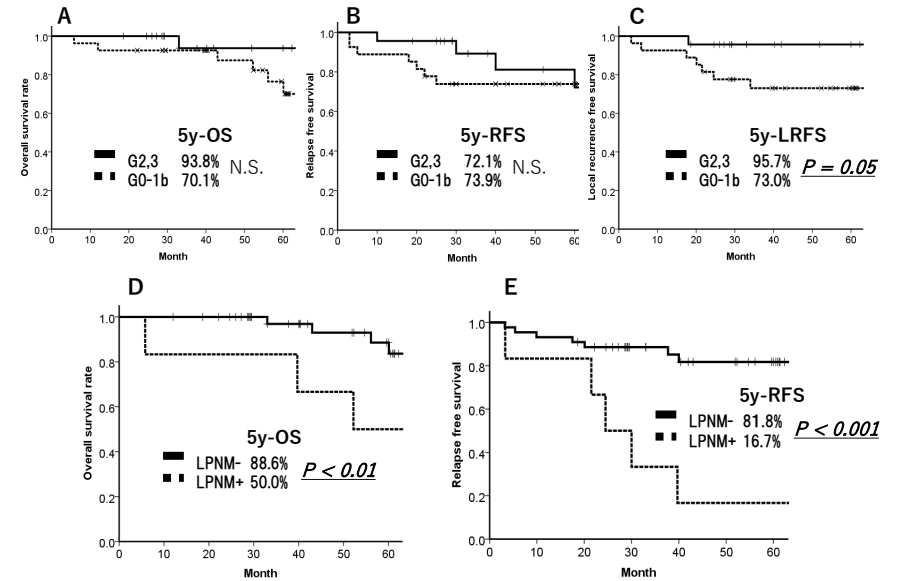
Wataru Sakamoto, Shinji Ohki, Hisashi Onozawa, Hirokazu Okayama, Hisahito Endo, Shotaro Fujita, Motonobu Saito, Zenichiro Saze, Tomoyuki Momma, Seiichi Takenoshita and Koji Kono

Department of Gastrointestinal Tract Surgery, School of Medicine Fukushima Medical University, Fukushima, Japan

Treatment outcome	nRT (n = 25)	nCRT (n = 25)	P value
downstaging*			
T factor*	10 (40%)	15 (60%)	n.s.
Stage*	11 (44%)	14 (56%)	n.s.
pCR rate	0 (0%)	6 (24%)	P = 0.01
pathological therapeutic effects			
0-1b	20 (80%)	9 (36%)	P < 0.01
2+3	5 (20%)	18 (64%)	
R0 resection	24 (96%)	25 (100%)	n.s.
lateral pelvic lymph node metastasis	3 (12%)	3 (12%)	n.s.
recurrence rate			
local	1 (4%)	2(8%)	n.s.
distant	6 (24%)	5 (20%)	n.s.



OS: overall survival, RFS: relapse free survival, LRFS: local recurrence free survival, CRT: chemoradiotherapy, RT: radiotherapy



OS: overall survival, RFS: relapse free survival, LRFS: local recurrence free survival, CRT: chemoradiotherapy, RT: radiotherapy, G: grade of pathological therapeutic effect (-0: no response, -1a necrosis and degradation of cancer are observed in less than one third of the tumor, 1b- are observed in more than one third and less than two thirds of the tumor, 2- are observed in more than two thirds of the tumor, 3- no viable cancer cells are observed microscopically.) LPNM: lateral pelvic lymph node metastasis,

当科で1999年～2012年施行されたstagell, IIIの進行下部直腸癌に対するshort course radiotherapy(SCRT)もしくはchemoradiotherapy(CRT)+両側側方郭清を施行した症例の後ろ向き観察研究報告である。(SCRT 25例, RT: 5Gy x 5Fr, total 25Gy v.s. CRT 25例, TS1内服: 80mg/m2, RT: 2Gyx25, total 50Gy)
 CRT群はSCRT群に比較してpCR率、組織学的治療効果判定が有意に良好であったが、両群間の5y-OS,RFS, LRFSには有意差は見られなかった。
 組織学的治療効果判定がG2,3であった症例はそれ以下であった症例に比べて5y-LRFS率が有意に良好であった。
 病理学的に側方リンパ節転移陽性であった症例は5y-OS, RFSともに有意に不良であった。